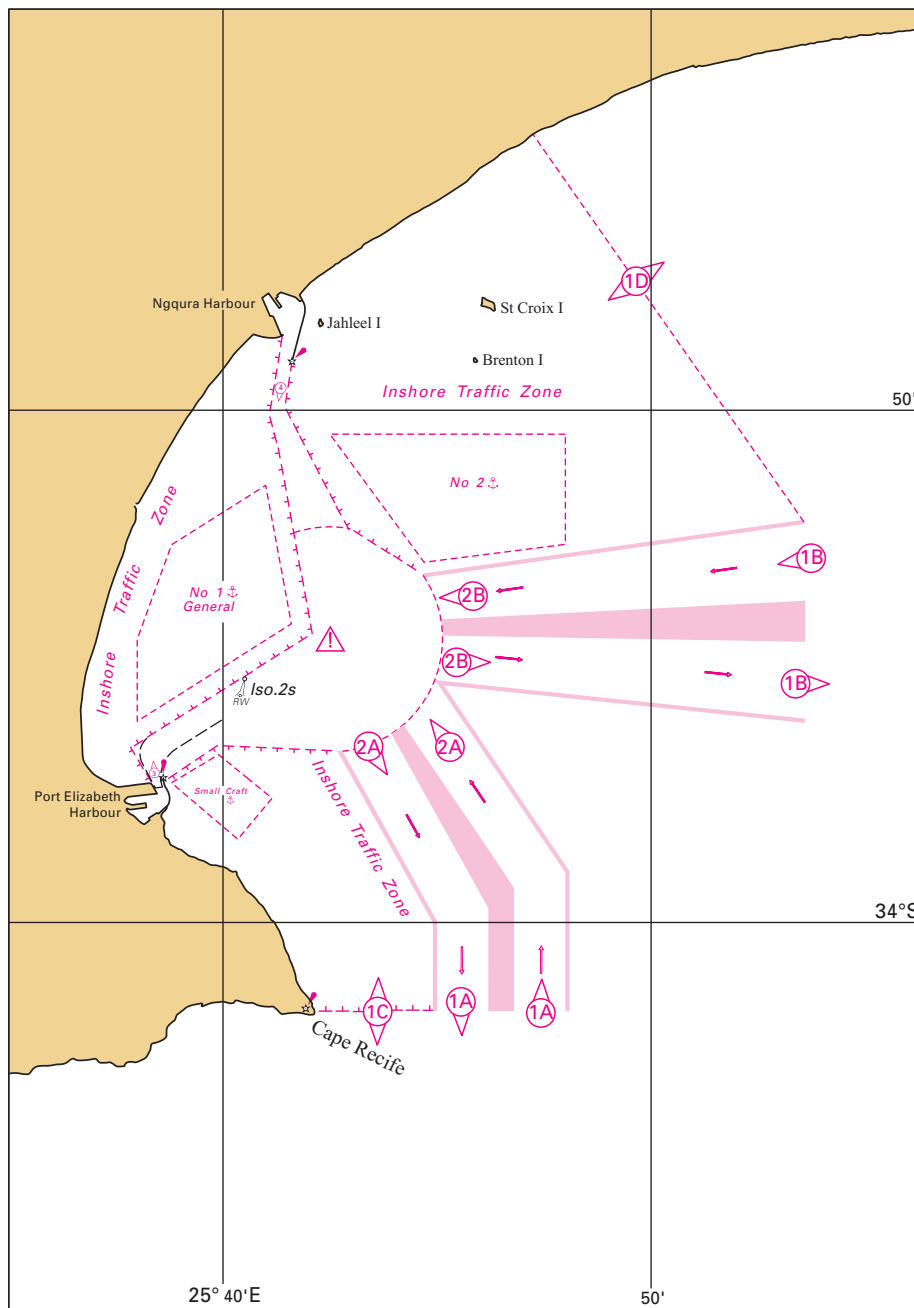


PORT ELIZABETH AND NGQURA APPROACHES



DESCRIPTION : Radar and VHF Radio Stations are installed at both Port Elizabeth and Port of Ngqura Port Control Towers to improve the navigational safety within the Port Control Limits. Radar coverage, out to a radius of 20nm, is expected. Both Port Elizabeth and Port of Ngqura Port Control Towers are equipped with Automatic Identification Systems (AIS).

CALL : Port Elizabeth Port Control.

LOCATION : Port Elizabeth VTS Control Center is situated at the Port Control Building Office, 33°57'.3 S 25°38'.3 E. Ngqura VTS Control Center is situated at the Port Control Building, 33°47'.4 S 25°41'.3 E.

FREQUENCY : VHF Channel 12.

HOURS : H24.

PROCEDURE : Vessels should call Port Elizabeth Port Control on Ch 12 when fifteen minutes from the Entry points for the Approach Traffic Lanes or 15 minutes before departure from her berth.

REPORTING POINTS**INBOUND**

1. Vessels should call Port Elizabeth Port Control on Ch 12 at the following Reporting Points:

a. **Vessels approaching from the West / South**

- i. When 15 minutes from Reporting Point 1A.
- ii. When passing the following Reporting Points :

1A.		34°01'.75 S	25°47'.40 E.
2A.		33°56'.25 S,	25°45'.00 E.

b. **Vessels approaching from the East**

- i. When 15 minutes away from Reporting Point 1B (approximately when crossing the 25° 55' E meridian.)
- ii. When passing Reporting Points

1B.	In	33°53'.00 S	25°53'.60 E.
2B.	In	33°53'.65 S	25°45'.80 E.

OUTBOUND

2. Vessels should call Port Elizabeth Port Control on Ch 12 at the following Reporting Points:

a. **Vessel departing for the high seas**

3.	Out	33°57'.17 S	25°38'.47 E - Port Elizabeth Harbour.
4.	Out	33°49'.40 S	25°41'.40 E - Ngqura Harbour.
2A.	Out	33°56'.60 S	25°43'.40 E.
1A.	Out	34°01'.75 S	25°45'.60 E.
2B.	Out	33°54'.80 S	25°45'.20 E.
1B.	Out	33°55'.30 S	25°53'.60 E.

INSHORE ROUTES: INBOUND OR OUTBOUND

3. Vessels should call Port Elizabeth Port Control on Ch 12 at the following Reporting Points:

1C.	In/Out	34°01'.75 S	25°43'.70 E.
1D.	In/Out	33°48'.50 S	25°50'.50 E.
3.	Out	33°57'.17 S	25°38'.47 E - Port Elizabeth Harbour.
4.	Out	33°49'.40 S	25°41'.40 E - Ngqura Harbour.

PILOT BOARDING PLACE

Port Elizabeth Harbour	33°55'.55 S	25°40'.90 E.
Ngqura Harbour	33°52'.90 S	25°42'.80 E.

INFORMATION REQUIRED

1. The following information **relating to the vessel** shall be passed when making the initial report ;

- i. Name.
- ii. Callsign, GRT, LOA, Draught.
- iii. Position.
- iv. ETA of Vessel when entering the VTS Zone.
- v. Destination.
- vi. ETA at Destination.
- vii. Whether any Hazardous Cargo is carried on board.

2. The VTS Centers will provide the vessel with up to date information on berthing arrangements, Pilots, and relevant traffic movements in the area for both Ports.

Note: The System is linked to the Port Control Administration Offices, MRCC, Pilot Station, and the local Coast Radio Station.