

SUBMARINE CABLE

Anchoring and trawling is prohibited one nautical mile either side of the submarine cable. See Annual Notice to Mariners No. 23 and South African Sailing Directions Volume I.

SUBMARINE CABLE

Anchoring and trawling is prohibited one nautical mile either side of the submarine cable. See Annual Notice to Mariners No. 23 and South African Sailing Directions Volume I.

SUBMARINE CABLE

Anchoring and trawling is prohibited one nautical mile either side of the submarine cable. See Annual Notice to Mariners No. 23 and South African Sailing Directions Volume I.

BAKOVEN	2	(1) 021 449 3500	(2) 082 990 5962	(3) 072 496 1145
TABLE BAY (V&A)	3	(1) 021 449 3500	(2) 082 990 5963/4	(3) 083 409 9271
MYKONOS	4	(1) 022 714 1726	(2) 082 990 5966	(3) 083 561 1113
DURBAN	5	(1) 031 361 8567	(2) 082 990 5948	(3) 082 448 6713
PORT ELIZABETH	6	(1) 041 507 1911	(2) 041 585 6011	(3) 082 990 0828
EAST LONDON	7	(1) 043 700 2100	(2) 082 990 5972	(3) 082 927 2299 DSC
HOUT BAY	8	(1) 021 449 3500	(2) 082 372 8792	(3) 071 678 0523 DSC
GORDON'S BAY	9	(1) 021 449 3500	(2) 083 625 0481	(3) 083 275 2853 DSC
SIMON'S TOWN	10	(1) 021 449 3500	(2) 082 990 5965	(3) 082 851 5062 DSC
PORT ALFRED	11	(1) 083 212 1277	(2) 082 990 5971	(3) 083 301 7457
KNYSNA	12	(1) 082 990 5956	(2) 083 324 6558	(3) 083 324 4498 DSC
PLETTENBERG BAY	14	(1) 082 990 5975	(2) 082 569 5542	(3) 082 495 0410 DSC
MOSSEL BAY	15	(1) 082 990 5954	(2) 044 604 6271	(3) 082 658 6242 DSC
STRANDFONTEIN	16	(1) 021 449 3500	(2) 082 990 6753	(3) 071 594 5371
HERMANUS	17	(1) 021 449 3500	(2) 082 568 1829	(3) 082 7722 984
MELKBOSSTRAND	18	(1) 021 449 3500	(2) 082 990 5958	(3) 082 575 6954
RICHARDS BAY	19	(1) 035 753 1991	(2) 082 990 5949	(3) 072 060 6630 DSC
SHELLEY BEACH	20	(1) 082 990 5950	(2) 031 361 8567	(3) 072 147 9186 DSC
ST FRANCIS BAY	21	(1) 082 990 5969	(2) 082 956 7981	
VAAL DAM	22	(1) 016 371 1301	(2) 083 626 5128	
WILDERNESS	23	(1) 082 990 5955	(2) 044 8022 500	(3) 083 2989 192 DSC
LAMBERT'S BAY	24 A	(1) 082 922 4334	(2) 072 595 2166	
HARTEBESPOORT DAM	25	(1) 082 990 5961	(2) 083 263 9982	
KOMMETJIE	26	(1) 021 449 3500	(2) 072 754 3792	(3) 082 990 5979
VICTORIA LAKE	27	(1) 082 441 6989	(2) 082 552 0602 DSC	
PORT ST JOHNS	28	(1) 082 550 5430	(2) 047 564 1057	(3) 082 923 6278
KLEINMOND (Under NSRI 17 – Hermanus)	29 A	(4) 082 652 4309		
AGULHAS	30	(1) 082 990 5952	(2) 083 273 8234	(3) 076 604 8130
STILBAAI	31	(1) 082 990 5978	(2) 028 754 1501	(3) 082 855 9460
PORT EDWARD	32	(1) 076 617 5002	(2) 082 990 5951	(3) 073 523 6599
WITSAND	33	(1) 082 990 5957	(2) 071 683 8162	
YZERFONTEIN	34	(1) 022 714 1726	(2) 083 561 1113	(3) 082 990 5974 (4) 072 826 4042 DSC
WAVECREST	35	(1) 083 306 3037		
OYSTER BAY	36	(1) 083 653 6387	(2) 082 990 5969	
JEFFREYS BAY	37	(1) 079 916 0390	(2) 071 896 6831	(3) 083 678 0072
ASR (Air Sea Rescue unit)		(1) 083 677 7946	(2) 083 644 9216	(3) 083 678 0072

NOTE: (1), (2), (3) & (4) indicate order of preference. DSC: Deputy Station Commander.

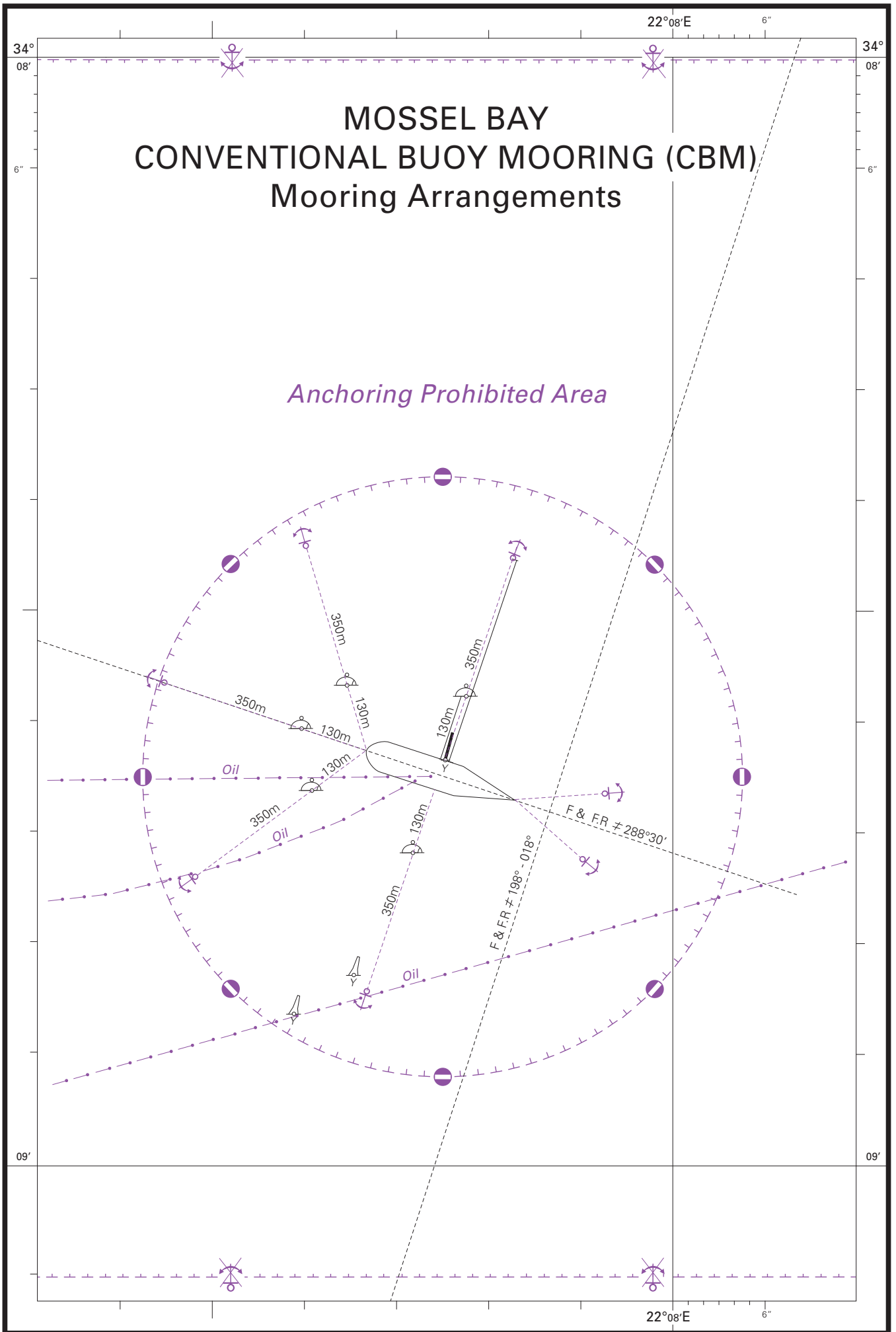


Figure 1: Mooring Arrangements at the Conventional Buoy Mooring (CBM)

To accompany NTM 89 of 2011.

